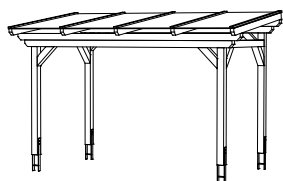


# Sanremo Free standing terrace roof

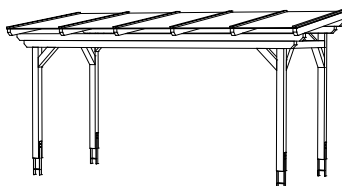


434x250cm



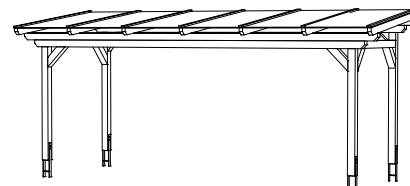
4018211 201730

541x250cm

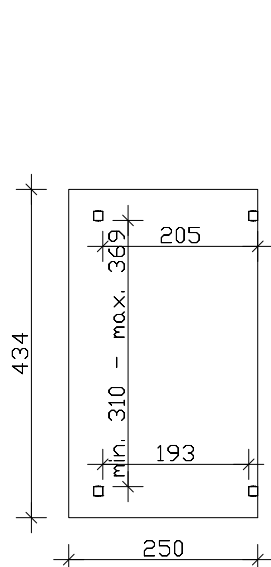


4018211 201815

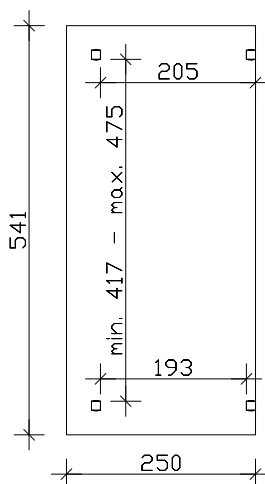
648x250cm



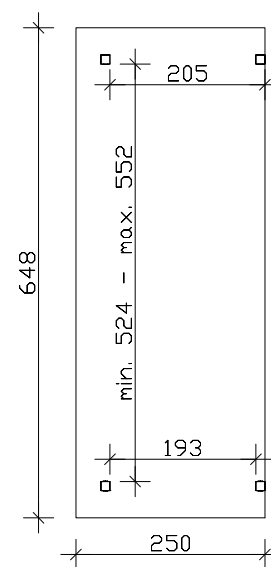
4018211 201891



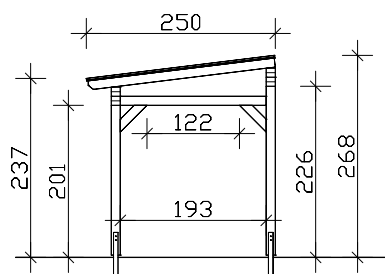
Floor plan



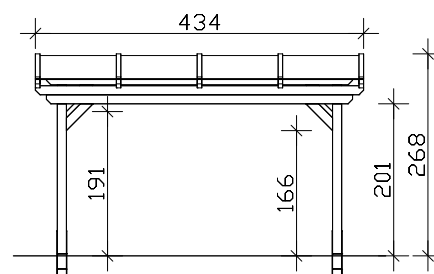
Floor plan



Floor plan



Side View



Front View

M 1:100

## "Sanremo" Free standing terrace roof 434cm / 541cm / 648cm x 250cm

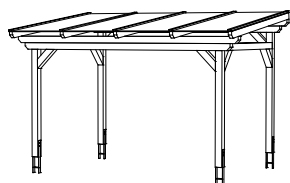
### Datensheet / Construction Description

Type of wood / Hardware	glulam, untreated / galvanised
Posts	2 pieces 12x12x198cm / 2 pieces 12x12x223cm
Roof covering	double bar 16mm (transparent)
Snow load	sk = 2,00kN/m <sup>2</sup>
Length x Depth	434cm / 541cm / 648cm x 250cm (roofed area)
Height / Entrance	237-268cm / 201cm (incl. distance to the ground, H-Ancors = 3cm)
Area (building volume)	10,85m <sup>2</sup> (27,40m <sup>3</sup> ) / 13,53m <sup>2</sup> (34,16m <sup>3</sup> ) / 16,20m <sup>2</sup> (40,91m <sup>3</sup> )
Roof inclination	7°
Package dimensions	W x L x H 120x435-650x50-55cm / weight 375/427,5/480kg
Including	Mounting material, H-Ancors, Upper struts, set up instructions (without concrete)

# Sanremo Free standing terrace roof

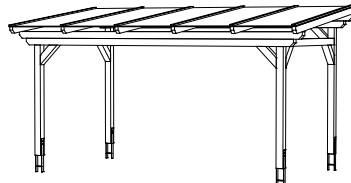


434x300cm



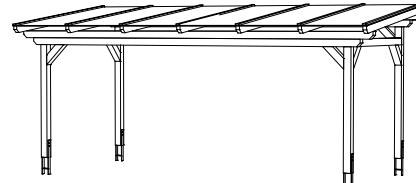
4018211 201754

541x300cm

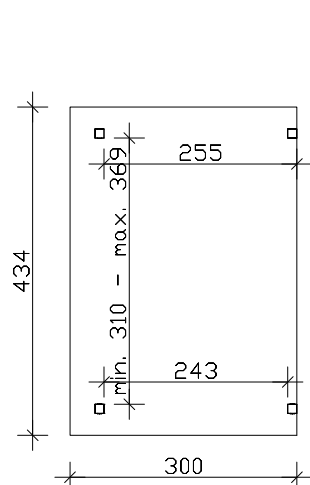


4018211 201839

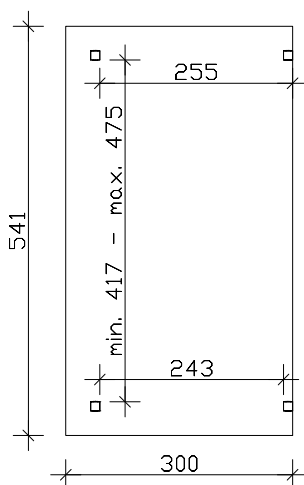
648x300cm



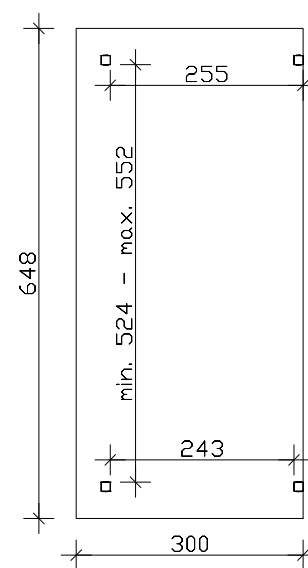
4018211 201914



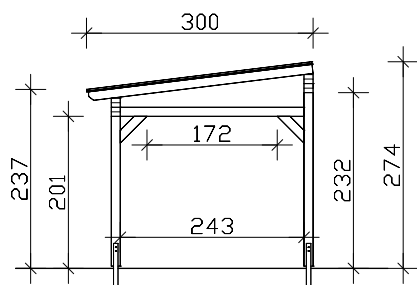
Floor plan



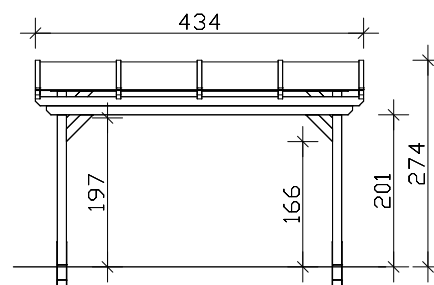
Floor plan



Floor plan



Side View



Front View

M 1:100

## "Sanremo" Free standing terrace roof 434cm / 541cm / 648cm x 300cm

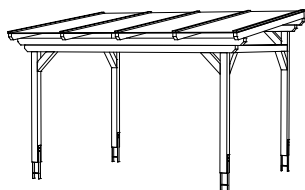
### Datensheet / Construction Description

Type of wood / Hardware	glulam, untreated / galvanised
Posts	2 pieces 12x12x198cm / 2 pieces 12x12x229cm
Roof covering	double bar 16mm (transparent)
Snow load	sk = 1,80kN/m <sup>2</sup>
Length x Depth	434cm / 541cm / 648cm x 300cm (roofed area)
Height / Entrance	237-274cm / 201cm (incl. distance to the ground, H-Ancors = 3cm)
Area (building volume)	13,02m <sup>2</sup> (33,27m <sup>3</sup> ) / 16,23m <sup>2</sup> (41,68m <sup>3</sup> ) / 19,44m <sup>2</sup> (49,67m <sup>3</sup> )
Roof inclination	7°
Package dimensions	W x L x H 120x435-650x50-55cm / weight 400/455/510kg
Including	Mounting material, H-Ancors, Upper struts, set up instructions (without concrete)

# Sanremo Free standing terrace roof

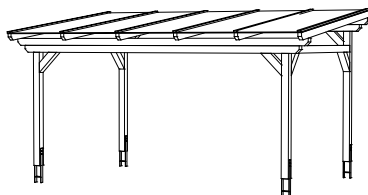


434x350cm



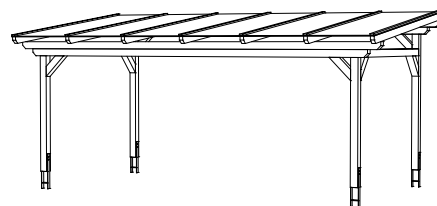
4018211 201778

541x350cm

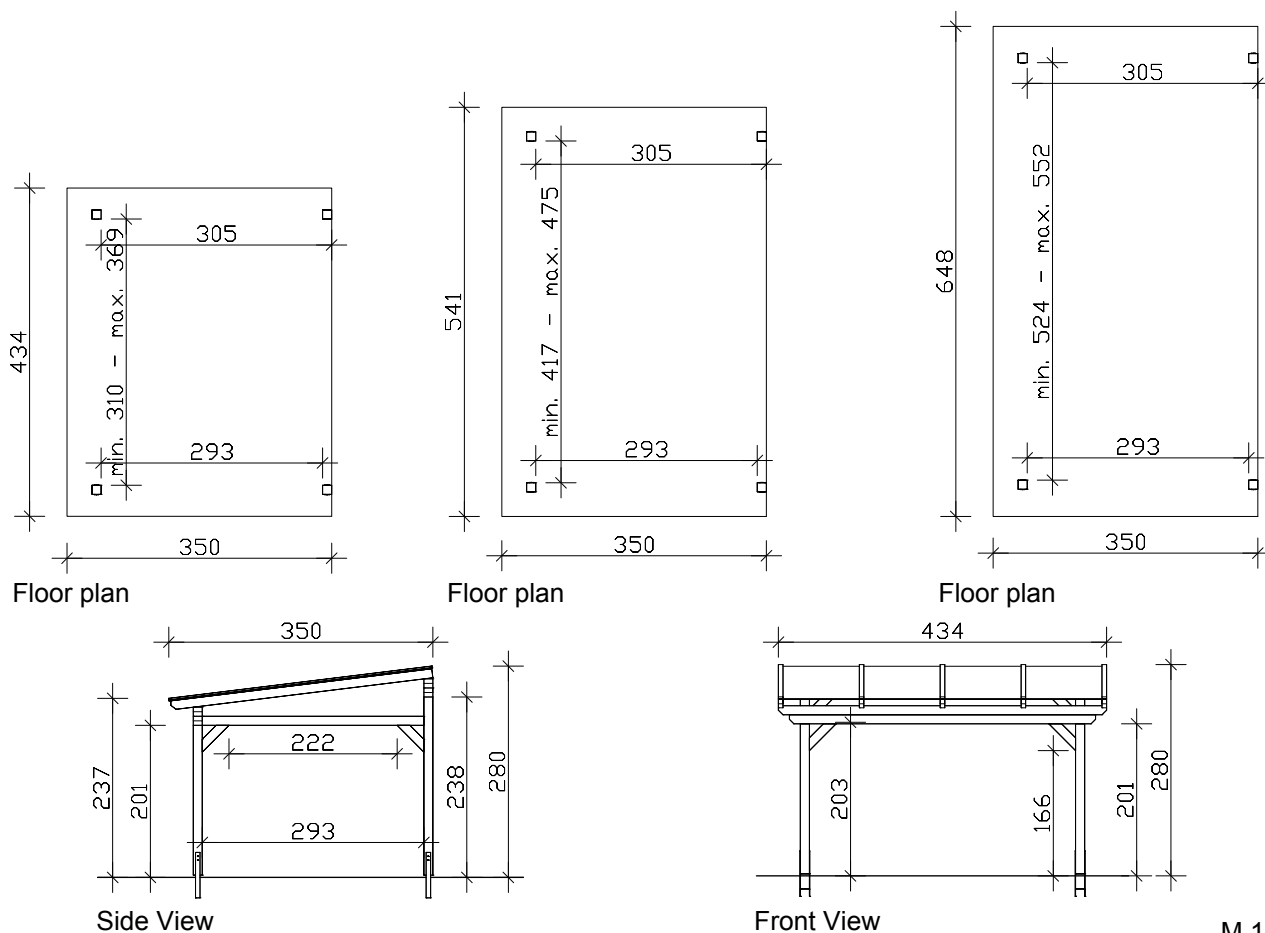


4018211 201853

648x350cm



4018211 201938



## "Sanremo" Free standing terrace roof 434cm / 541cm / 648cm x 350cm

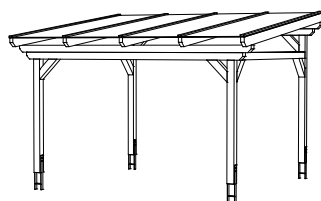
### Datensheet / Construction Description

<b>Type of wood / Hardware</b>	<b>glulam, untreated / galvanised</b>
<b>Posts</b>	<b>2 pieces 12x12x198cm / 2 pieces 12x12x235cm</b>
<b>Roof covering</b>	<b>double bar 16mm (transparent)</b>
<b>Snow load</b>	<b>sk = 1,00kN/m<sup>2</sup></b>
<b>Length x Depth</b>	<b>434cm / 541cm / 648cm x 350cm (roofed area)</b>
<b>Height / Entrance</b>	<b>237-280cm / 201cm (incl. distance to the ground, H-Ancors = 3cm)</b>
<b>Area (building volume)</b>	<b>15,19m<sup>2</sup> (39,27m<sup>3</sup>) / 18,94m<sup>2</sup> (48,96m<sup>3</sup>) / 22,68m<sup>2</sup> (58,63m<sup>3</sup>)</b>
<b>Roof inclination</b>	<b>7°</b>
<b>Package dimensions</b>	<b>W x L x H 120x435-650x50-55cm / weight 425/482,5/540kg</b>
<b>Including</b>	<b>Mounting material, H-Ancors, Upper struts, set up instructions (without concrete)</b>

# Sanremo Free standing terrace roof

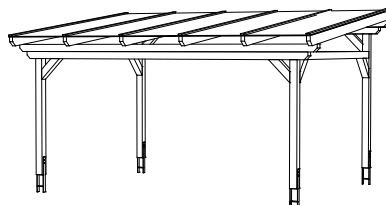


434x400cm



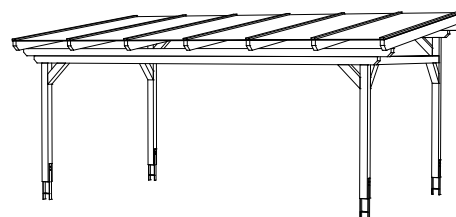
4018211 201792

541x400cm

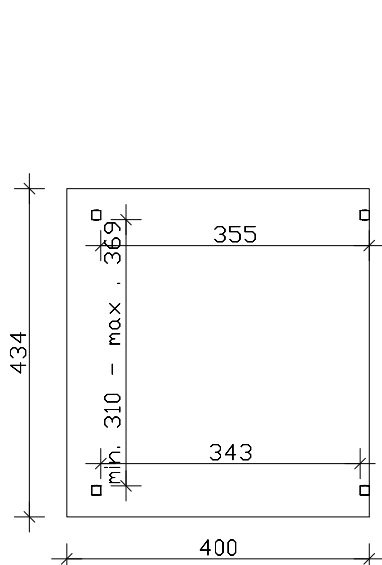


4018211 201877

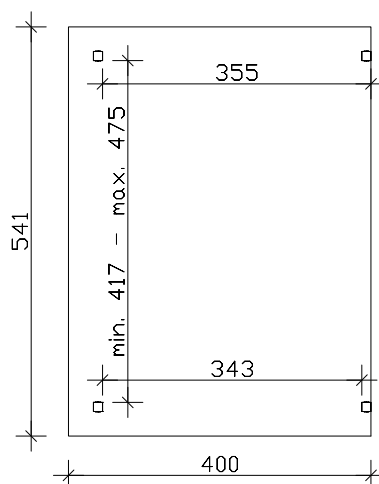
648x400cm



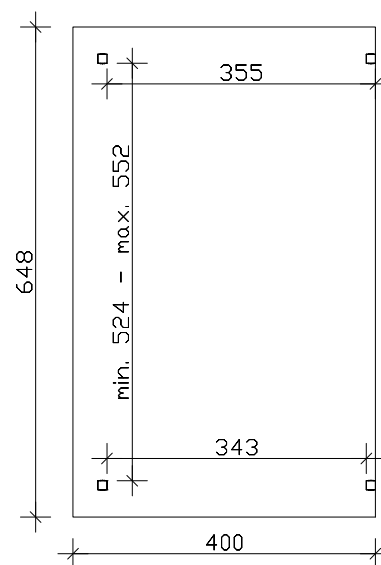
4018211 201952



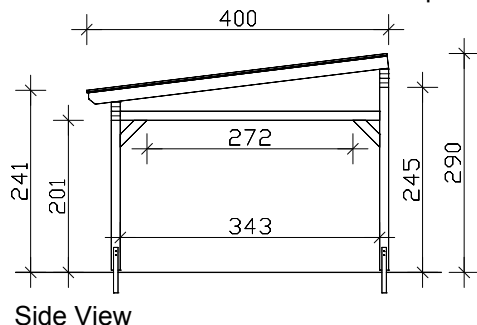
Floor plan



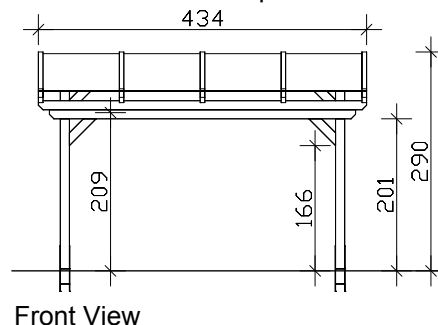
Floor plan



Floor plan



Side View



Front View

M 1:100

## "Sanremo" Free standing terrace roof 434cm / 541cm / 648cm x 400cm

### Datensheet / Construction Description

Type of wood / Hardware	glulam, untreated / galvanised
Posts	2 pieces 12x12x198cm / 2 pieces 12x12x242cm
Roof covering	double bar 16mm (transparent)
Snow load	sk = 1,50kN/m <sup>2</sup>
Length x Depth	434cm / 541cm / 648cm x 400cm (roofed area)
Height / Entrance	241-290cm / 201cm (incl. distance to the ground, H-Ancors = 3cm)
Area (building volume)	17,36m <sup>2</sup> (46,09m <sup>3</sup> ) / 21,64m <sup>2</sup> (57,45m <sup>3</sup> ) / 25,92m <sup>2</sup> (68,82m <sup>3</sup> )
Roof inclination	7°
Package dimensions	W x L x H 120x435-650x50-55cm / weight 480/550/620kg
Including	Mounting material, H-Ancors, Upper struts, set up instructions (without concrete)