

TRANSPAFORZA[®]
Canopies

TF - Smart Carport Assembly

Please Read Before Installation



semcom
Designer - Developer - Producer

www.tfsem.com

IMPORTANT

Please read these instructions carefully before you start to assemble this carport.
Please carry out the steps in the order set out in these instructions.
Keep these instructions in a safe place for future reference.

Care and Safety advice

- * Please follow the instructions as listed in this manual.
- * Sort the parts and check against the list of contents.
- * For safety purposes we strongly recommend that the product will be assembled by at least two people
- * Some parts have metal edges. Please be careful when handling components.
- * Always wear gloves, shoes and safety goggles during assembly.
- * Do not attempt to assemble the carport in windy or wet conditions.
- * Dispose of all plastic bags safely - keep them out of reach of small children.
- * Keep children away from the assembly area.
- * Do not attempt to assemble the carport if you are tired,
- * When using a stepladder or power tools, ensure that you follow the manufacturer's safety advice.
- * Do not climb or stand on the roof.
- * Heavy articles should not be leaned against the poles.
- * Please consult your local authorities if any permits are required to erect carport.
- * Keep roof and gutters clean of snow, dirt & leaves.
- * Heavy amounts of snow on roof can damage the carport making it unsafe to stand below or nearby.
- * This product was designed and produced to be a carport only.

MAINTENANCE NOTES

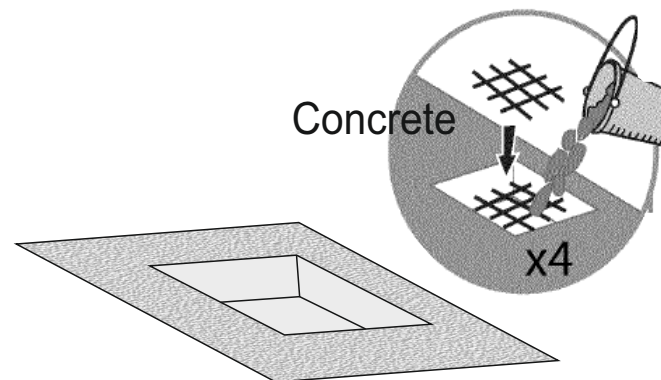
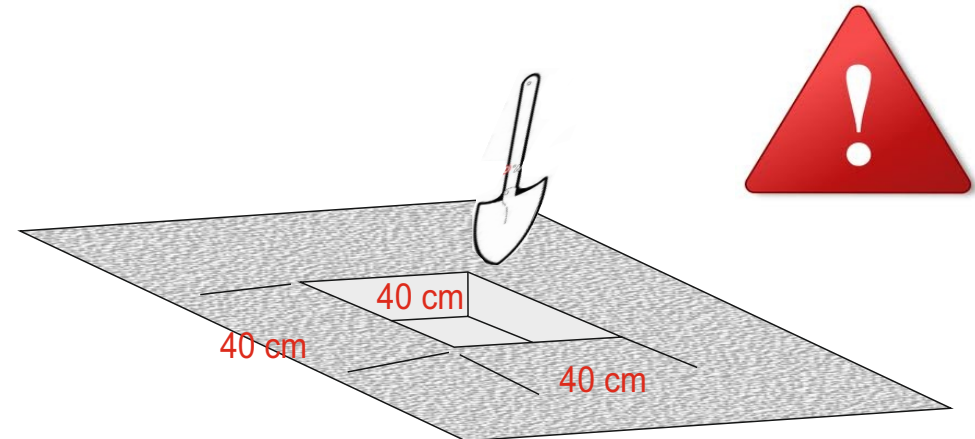
1. In case of a defective or damaged part, or for any other questions concerning the product, please contact the manufacturer directly.
2. Please have the parts list and part numbers on hand when ordering or requesting replacement parts.
3. When cleaning, use mild soap or detergent, warm water, and a washcloth or sponge.
4. While the product is designed for 4 seasons use, it is strongly recommended to clear snow from the roof on a regular basis.

LIMITATIONS ON THE WARRANTY

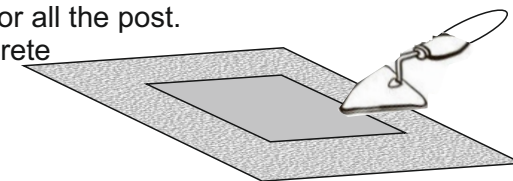
1. The product is not warranted against damages due to vandalism, abuse, or falling or thrown objects.
2. The product is not warranted against damages due to extreme weather conditions, such as thunderstorms, hail, strong wind or snow storms, or any other acts of God.
3. The product is only warranted in the event it is installed in accordance with the Transpa Forza written instructions enclosed with the product.
4. The product is not warranted in the event it has been improperly anchored.

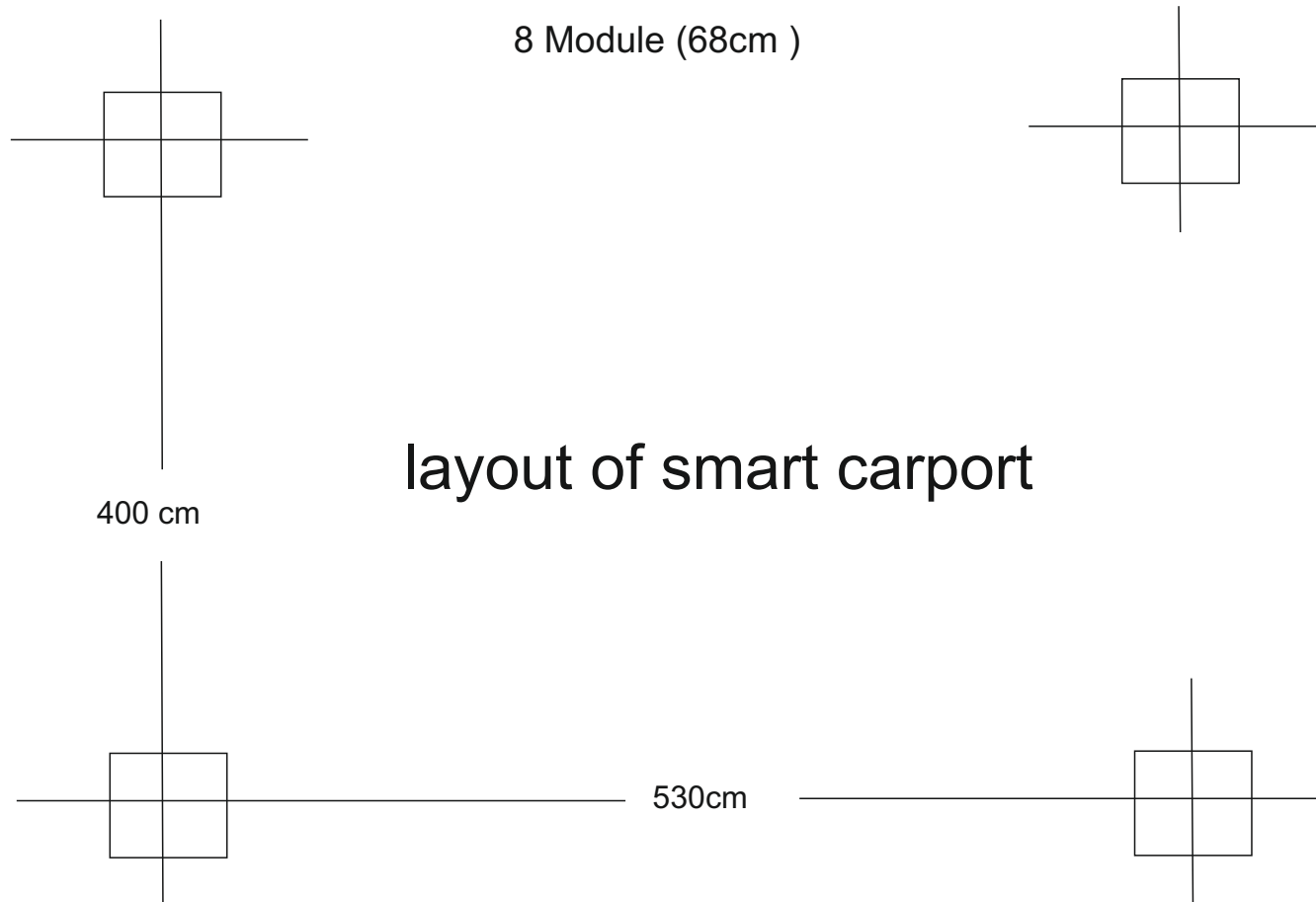
IN CASE THE GROUND IS SOIL

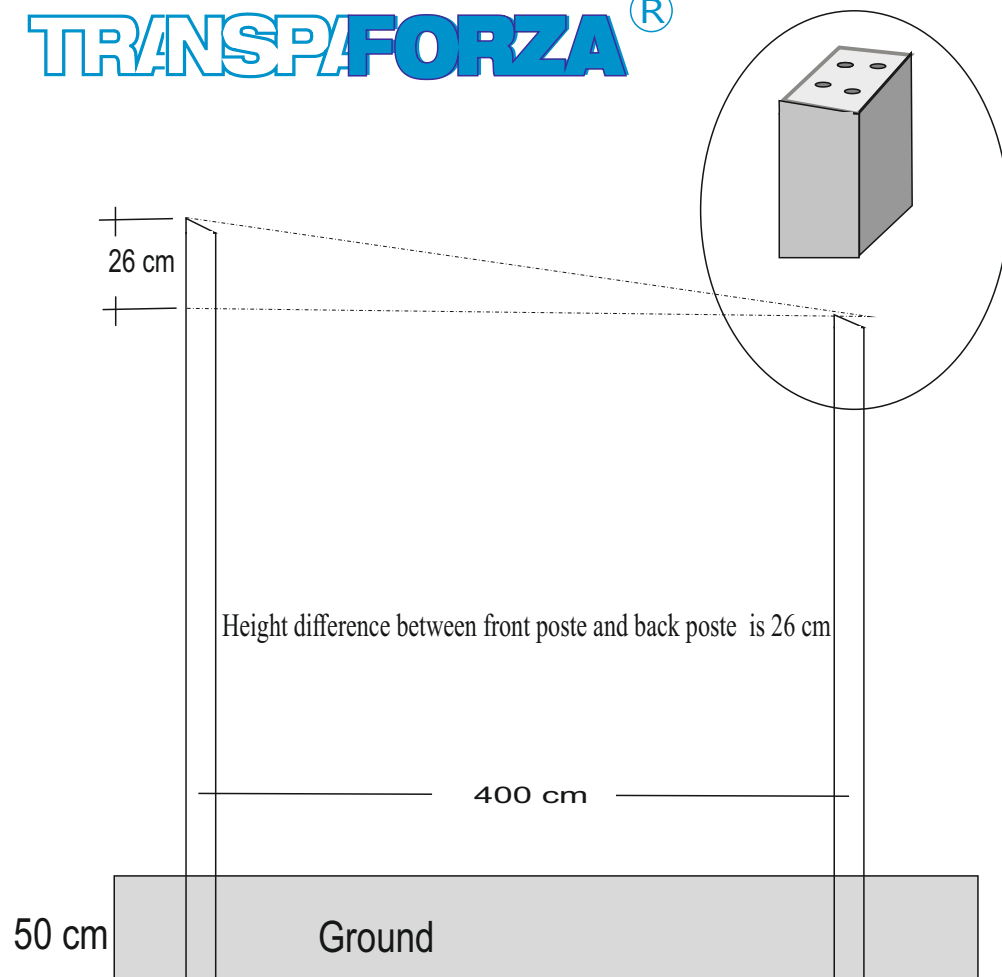
In case of ground is a soil , prepare a hole of 40x40x40 cm for all the post. Make a anchorage , and fill with concrete .
Follow the top instructions



Prepare the holes of 40x40x40 cm for all the post.
Make a anchorage ,and fill with concrete

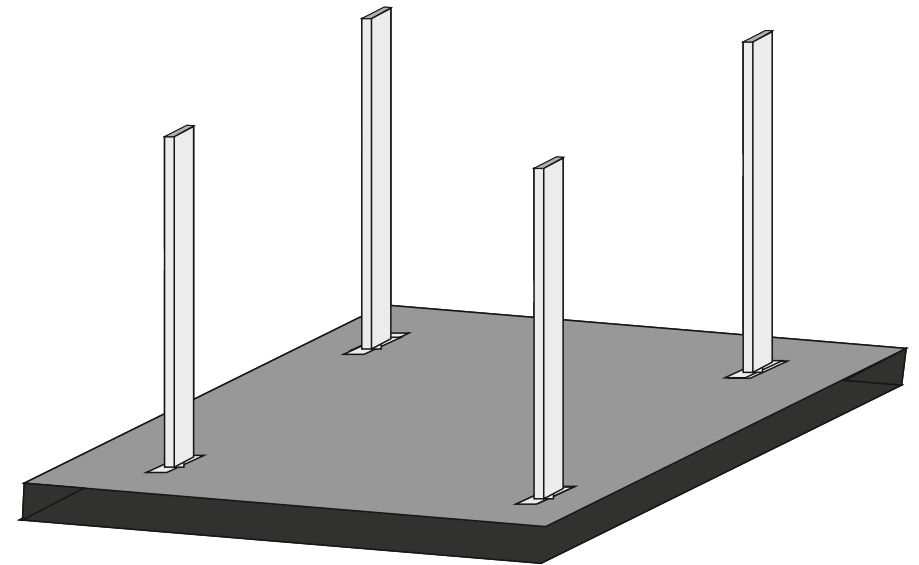




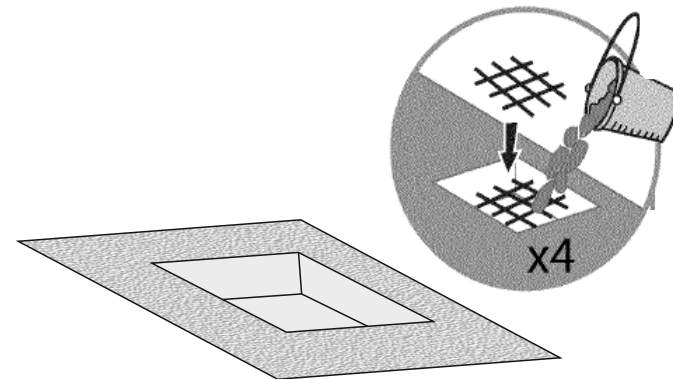


Prepare the foundations hole , place the colons profile and fill with concrete all the fondations holes

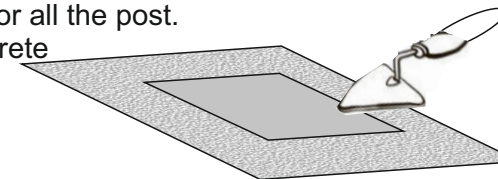
1 Preparation of the assembly ground area



Concrete



Prepare the holes of 50x50x50 cm for all the post. Make a anchorage ,and fill with concrete

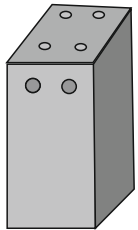


TRANSPAFORZA

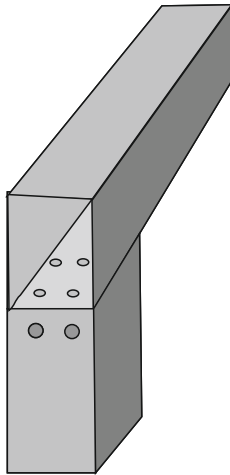
Preparations Of , support post profiles

1 Front profiles 100 x150 mm
2 Rear profiles 100 x150 mm
3 Post profiles 100 x150 mm

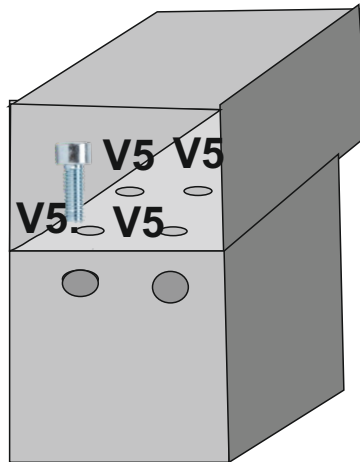
A) align the post profile



3 post profile



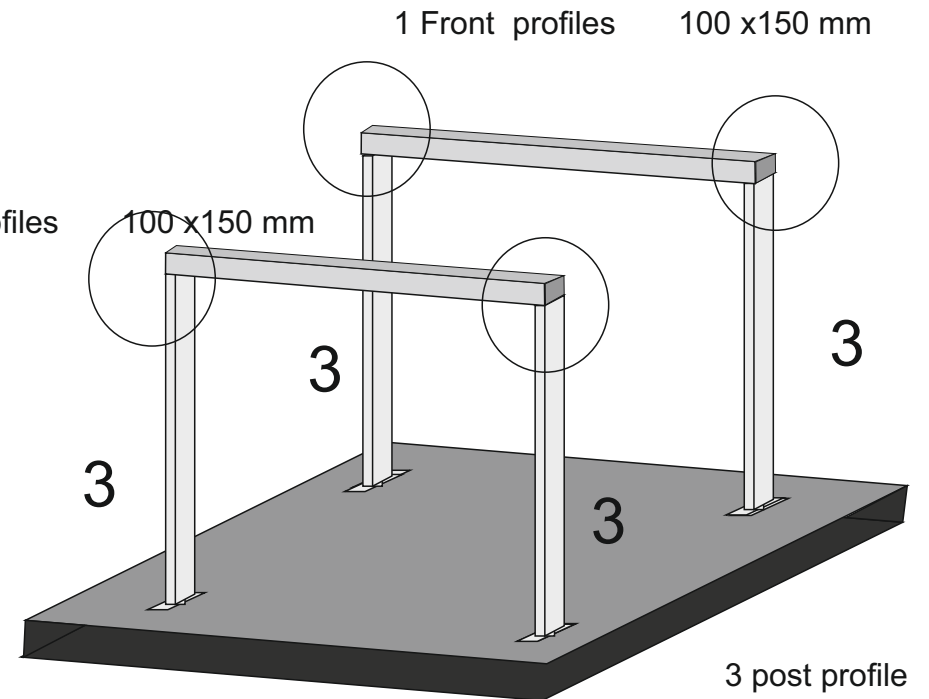
3 post profile



3 post profile

B) Screw the post profile to the rear and front profile with the screw V 5

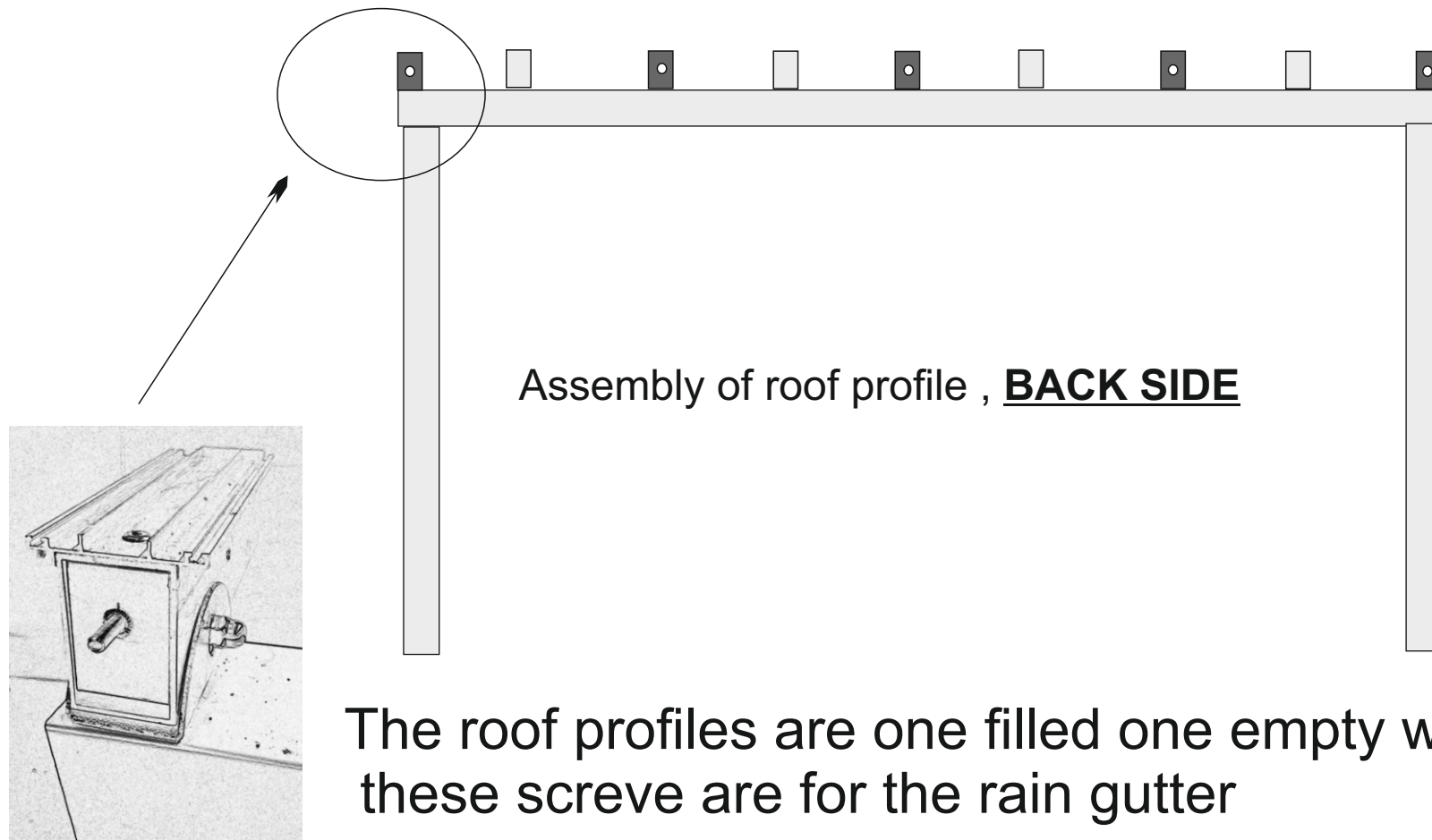
2 Rear profiles



Make the same operations for the 4 part

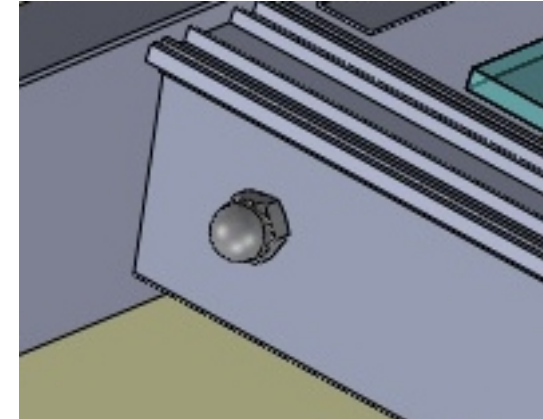
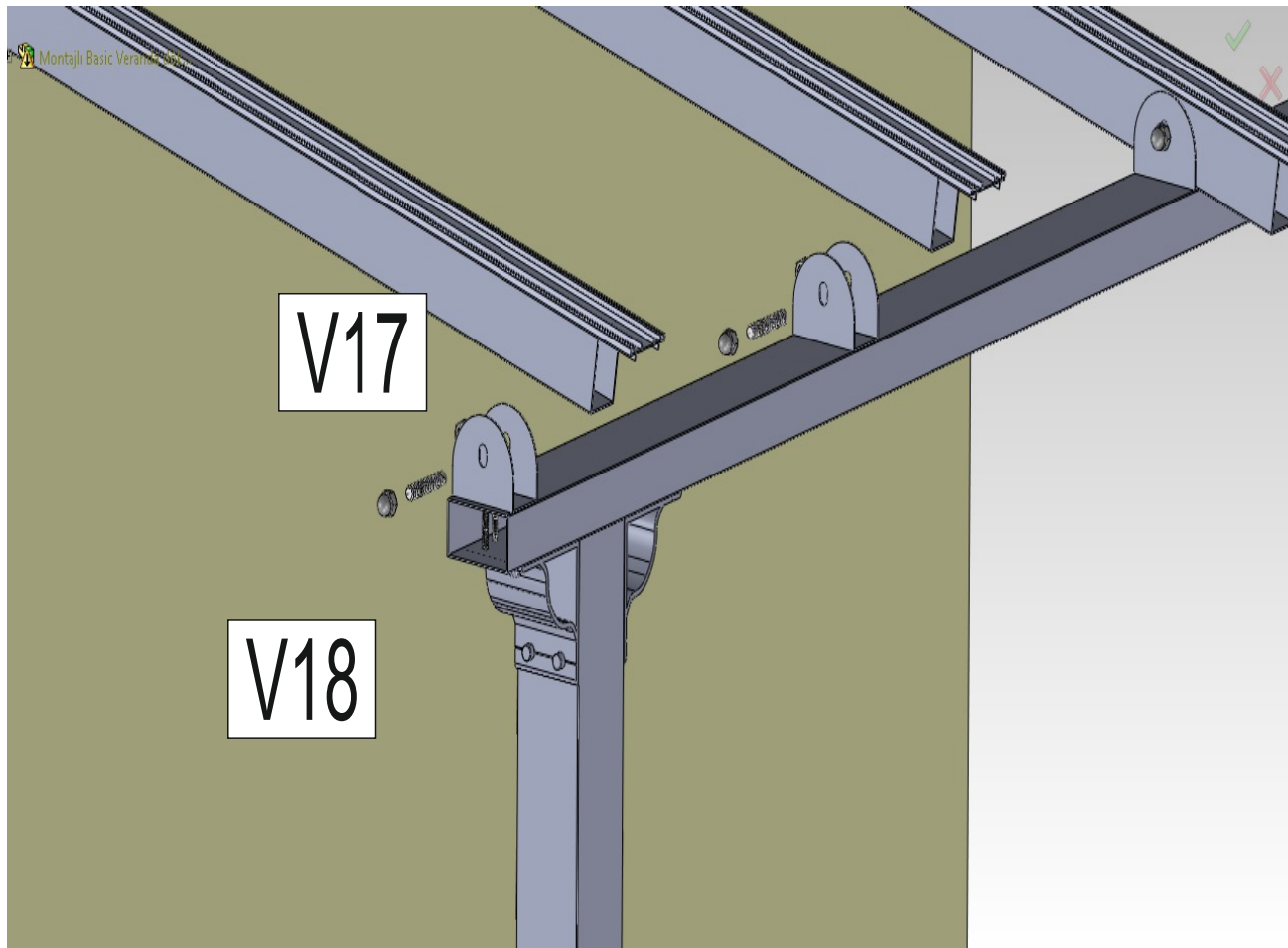
ATTENTION

The Roof profile for the back side have screw for the installations of rain gutter . and the roof profile have to assembly as the drawing.

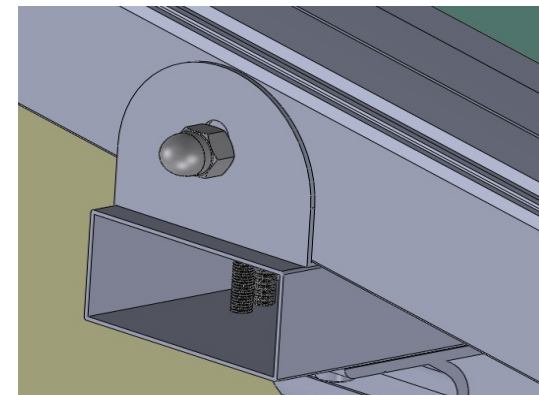


ASSEMBLY ROOF PROFILES

Place the roof profile to the holder part from the wall side.



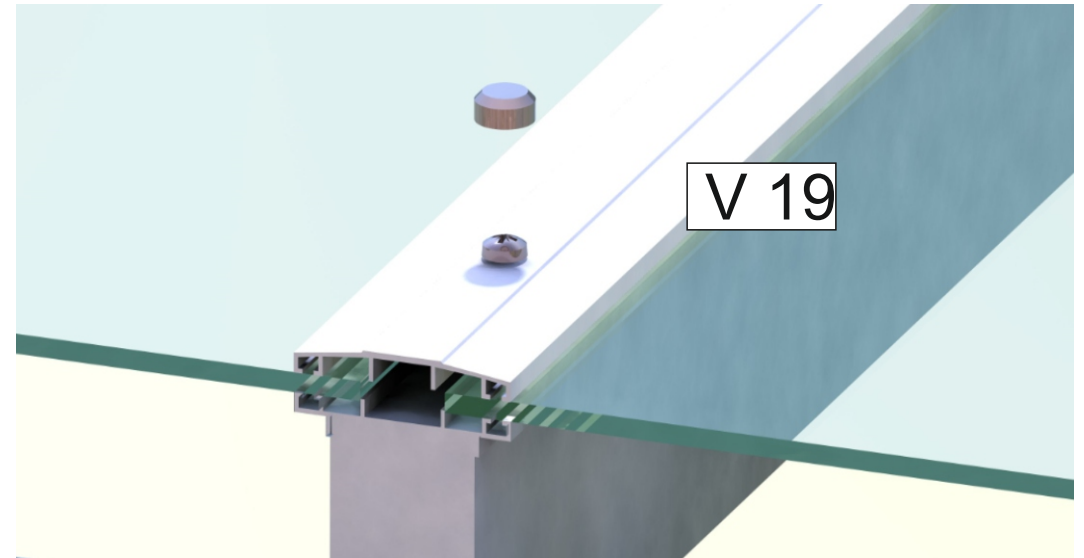
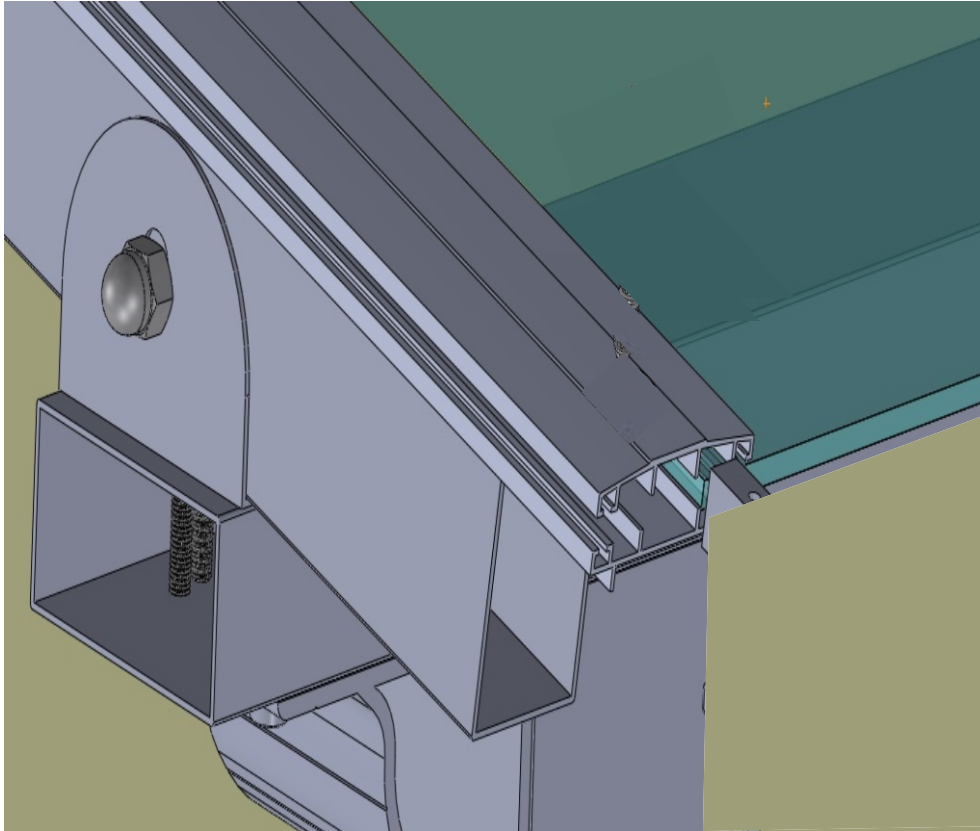
Fix the profile with the holder with the screw V 17 and Nut18



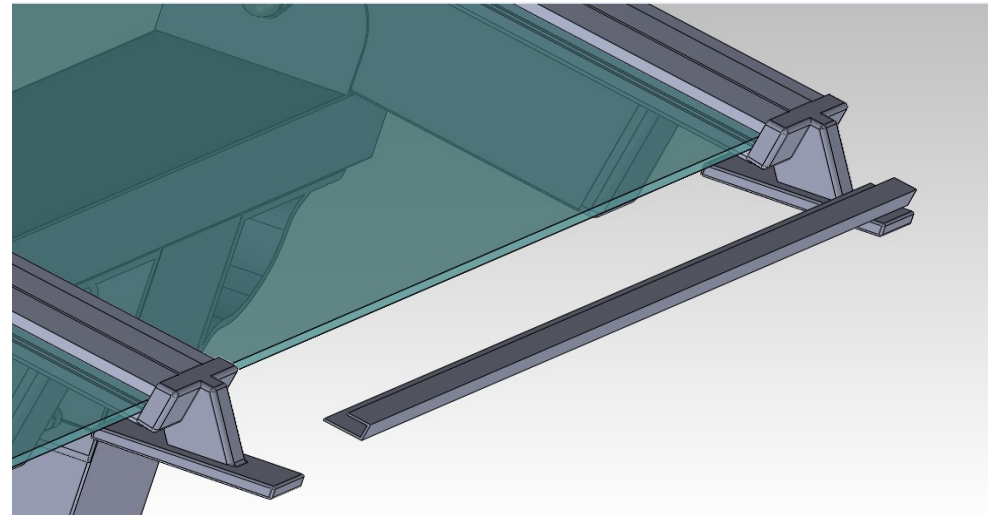
Make the same operations for the front side .
Screw V17 with the nuts V 18 from both side

TRANSPA**FORZA**®

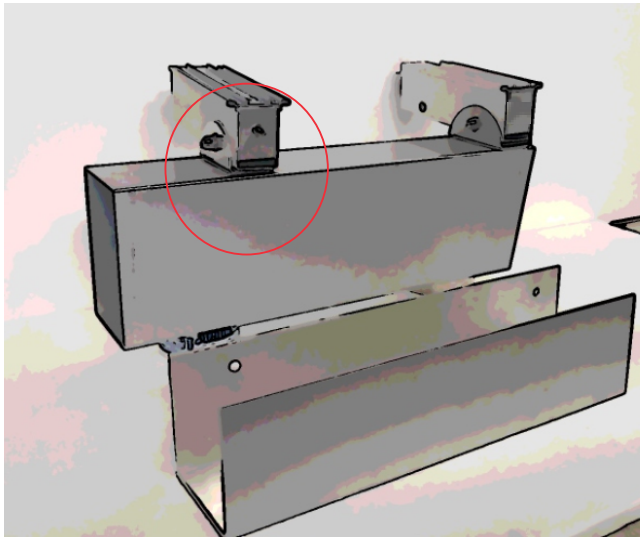
ASSEMBLY OF ROOF SHEETS



Close with the upper roof profile and screw with V 19



Place and siliconize the front closure profile .



INSTALLATION OF RAIN GUTTER

After all installation of carport ,hang up the rain gutter from the back side of roof profiles

Fix the rain gutter , with N24

Siliconize the end cups of gutter profile .
Place the water pipe from the post profile

