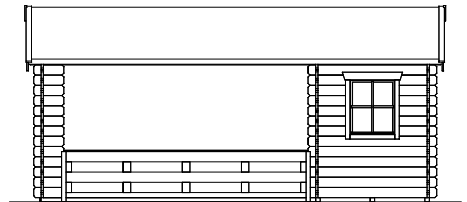
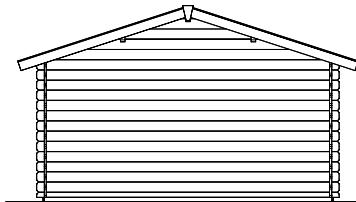
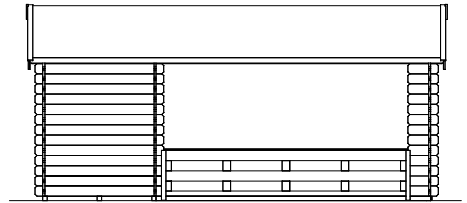
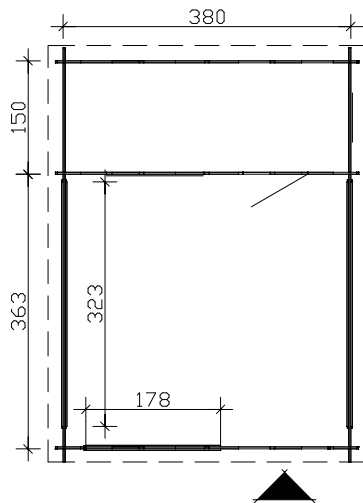
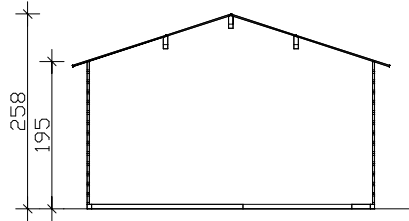
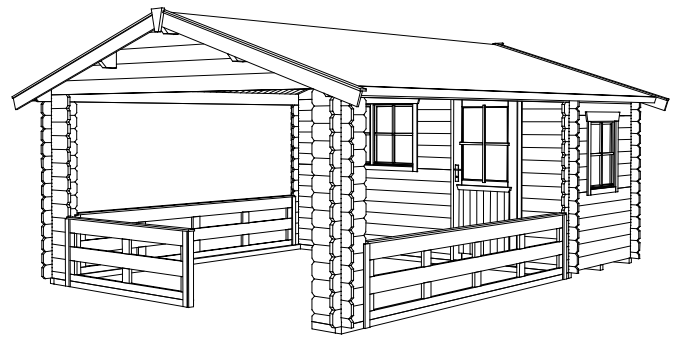


**SKAN HOLZ**  
**Log cabins**

1. 28mm planks as stable wall construction
2. concealed cross-bracing for optimum utilization of space
3. profiled corner connections for reliable protection against rain

Wooden floor with ground supports, roofing paper and accessories included.

SKAN HOLZ corner connections



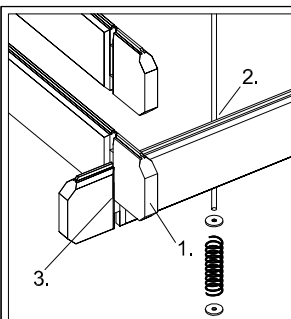
Floor plan, cross-section and elevations M 1:100

**Alicante 1 380 x 513cm**

**Data sheet / construction description**

*Alicante*

<b>Walls</b>	<b>28mm wooden planks</b> , untreated
<b>Roof</b>	<b>19mm profiled wood</b> , untreated
<b>Floors</b>	<b>19mm floor planks</b> (only in storage room), untreated
<b>Ground supports</b>	<b>60 x 60mm</b> , impregnated
<b>Iron parts</b>	<b>galvanized</b>
<b>Width x depth</b>	<b>380cm x 363cm + storage room 380 x 150cm</b>
<b>Height, eaves / gable</b>	<b>195cm / 258cm</b>
<b>Area / building volume</b>	<b>5,70m<sup>2</sup></b> (storage room) / <b>13,80m<sup>3</sup></b> (terrace) / <b>44,15m<sup>3</sup></b> (altogether)
<b>Roof inclination</b>	<b>18°</b> / snow load max. <b>sk = 0,75kN/m<sup>2</sup></b>
<b>Roof extension</b>	<b>everywhere 20cm</b> / roof surface <b>24,07m<sup>2</sup></b>
<b>Packaging unit</b>	<b>Width x length x height 120 x 551 x 46cm</b> / <b>882kg</b>
<b>EAN</b>	<b>4018211 551606</b>
<b>Inclusive</b>	<b>1 single door</b> (passage 78,5 x 179,5cm), <b>1 side hinged-bottom-hung single window</b> (opening 57,5 x 70,5cm), <b>1 side hinged-bottom-hung double window</b> (opening 2 x 57,5 x 70,5cm), <b>1 layer of tarpaper for roofing, concealed tie rod construction, profiled corner connections</b>

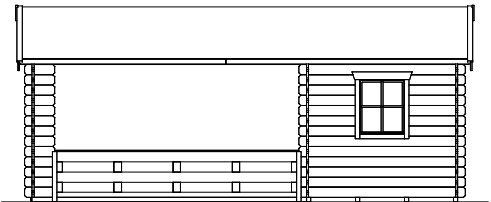
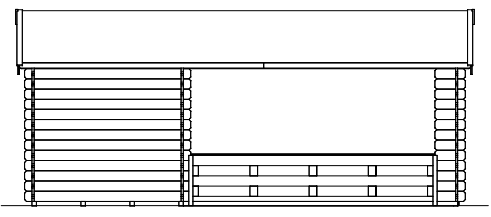
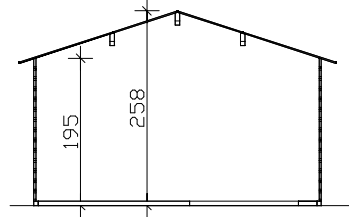
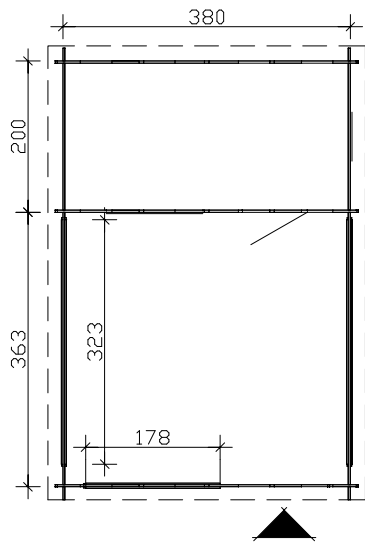
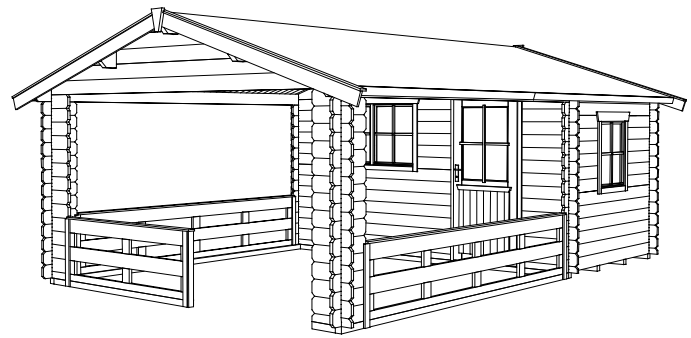


**SKAN HOLZ**  
**Log cabins**

1. 28mm planks as stable wall construction
2. concealed cross-bracing for optimum utilization of space
3. profiled corner connections for reliable protection against rain

Wooden floor with ground supports, roofing paper and accessories included.

SKAN HOLZ corner connections



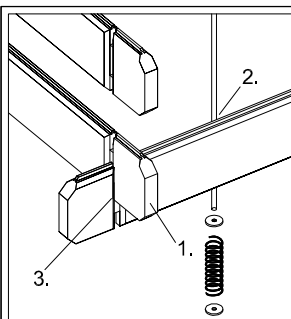
Floor plan, cross-section and elevations M 1:100

**Alicante 2 380 x 563cm**

**Data sheet / construction description**

*Alicante*

<b>Walls</b>	<b>28mm-wooden planks</b> , untreated
<b>Roof</b>	<b>19mm profiled wood</b> , untreated
<b>Floors</b>	<b>19mm floor planks</b> (only in storage room), untreated
<b>Ground supports</b>	<b>60 x 60mm</b> , impregnated
<b>Iron parts</b>	<b>galvanized</b>
<b>Width x depth</b>	<b>380cm x 363cm + storage room 380 x 200cm</b>
<b>Height, eaves / gable</b>	<b>195cm / 258cm</b>
<b>Area / building volume</b>	<b>7,60m<sup>2</sup></b> (storage room) / <b>13,80m<sup>3</sup></b> (terrace) / <b>48,46m<sup>3</sup></b> (altogether)
<b>Roof inclination</b>	<b>18° / snow load max. sk = 0,75kN/m<sup>2</sup></b>
<b>Roof extension</b>	<b>everywhere 20cm / roof surface 26,27m<sup>2</sup></b>
<b>Packaging unit</b>	<b>Width x length x height 120 x 605 x 42cm / 955kg</b>
<b>EAN</b>	<b>4018211 552603</b>
<b>Inclusive</b>	<b>1 single door</b> (passage 78,5 x 179,5cm), <b>1 side hinged-bottom-hung single window</b> (opening 57,5 x 70,5cm), <b>1 side hinged-bottom-hung double window</b> (opening 2 x 57,5 x 70,5cm), <b>1 layer of tarpaper for roofing, concealed tie rod construction, profiled corner connections</b>

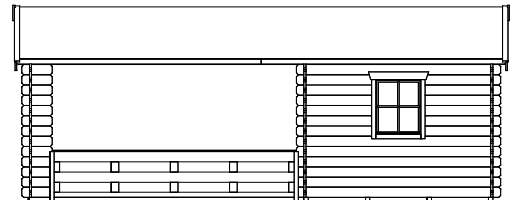
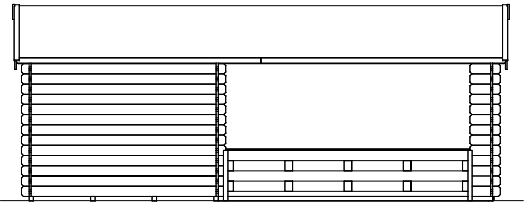
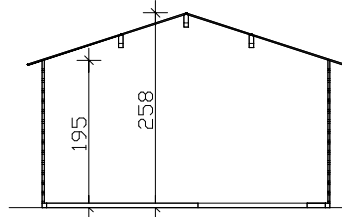
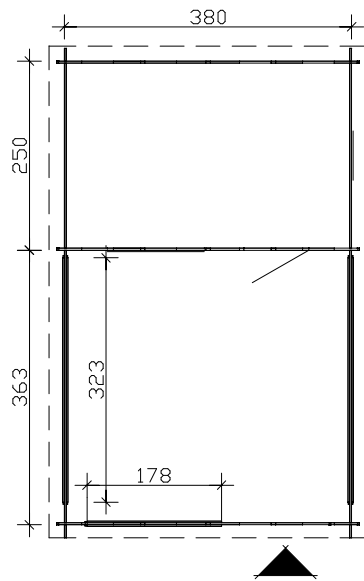
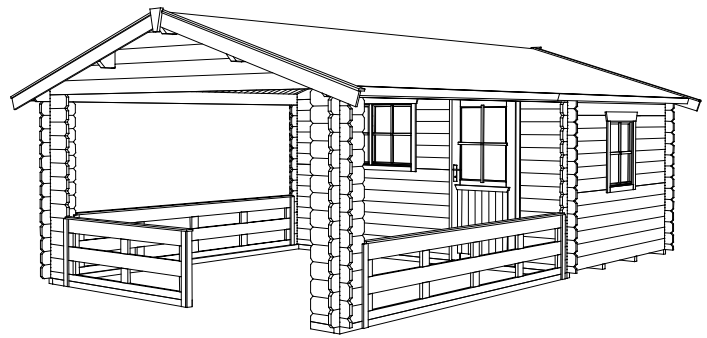


**SKAN HOLZ**  
Log cabins

1. 45mm planks as stable wall construction
2. concealed cross-bracing for optimum utilization of space
3. profiled corner connections for reliable protection against rain

Wooden floor with ground supports, roofing paper and accessories included.

SKAN HOLZ corner connections



Floor plan, cross-section and elevations M 1:100

**Alicante 3 380 x 613cm**

**Data sheet / construction description**



<b>Walls</b>	<b>28mm-wooden planks</b> , untreated
<b>Roof</b>	<b>19mm profiled wood</b> , untreated
<b>Floors</b>	<b>19mm floor planks</b> (only in storage room), untreated
<b>Ground supports</b>	<b>60 x 60mm</b> , impregnated
<b>Iron parts</b>	<b>galvanized</b>
<b>Width x depth</b>	<b>380cm x 363cm + storage room 380 x 250cm</b>
<b>Height, eaves / gable</b>	<b>195cm / 258cm</b>
<b>Area / building volume</b>	<b>9,50m<sup>2</sup></b> (storage room) / <b>13,80m<sup>3</sup></b> (terrace) / <b>52,76m<sup>3</sup></b> (altogether)
<b>Roof inclination</b>	<b>18° / snow load max. sk = 0,75kN/m<sup>2</sup></b>
<b>Roof extension</b>	<b>everywhere 20cm / roof surface 28,47m<sup>2</sup></b>
<b>Packaging unit</b>	<b>Width x length x height 120 x 510 x 54cm / 1025kg</b>
<b>EAN</b>	<b>4018211 553600</b>
<b>Inclusive</b>	<b>1 single door</b> (passage 78,5 x 179,5cm), <b>1 side hinged-bottom-hung single window</b> (opening 57,5 x 70,5cm), <b>1 side hinged-bottom-hung double window</b> (opening 2 x 57,5 x 70,5cm), <b>1 layer of tarpaper for roofing, concealed tie rod construction, profiled corner connections</b>