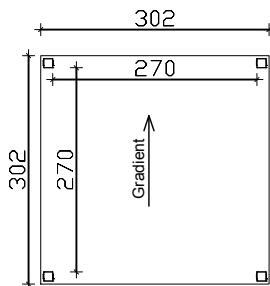
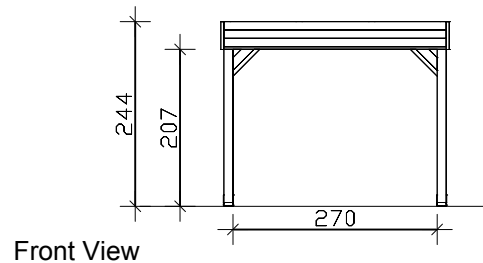


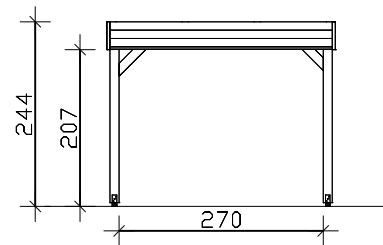
4018211 371334



Floor plan



Front View



Side View

M 1:100

"Toulouse" Gazebo 302cm x 302cm
Datasheet / Construction Description

Type of wood / Hardware	softwood, untreated / galvanised
Posts	4 pieces 12x12 cm
Roof	profile boards (tongued and grooved board)
Roof surface	9,12 m ²
Snow load	sk = 1,10 kN/m ²
Length x Depth	302 cm x 302 cm
Height / Entrance	244cm / (207cm)
Area (building volume)	9,12 m ² (22,25 m ³)
Package dimensions	WxLxH 120x320x45cm / weight 294kg
Including	Mounting material, screw on post, upper struts, set up instructions