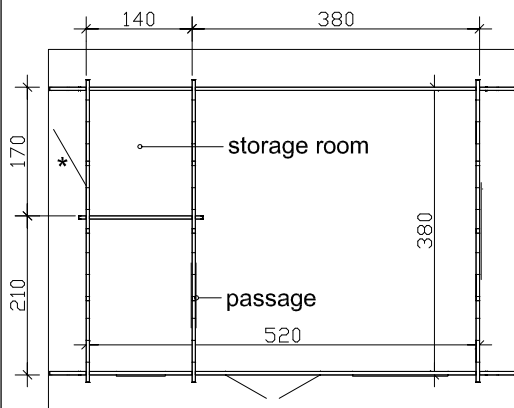
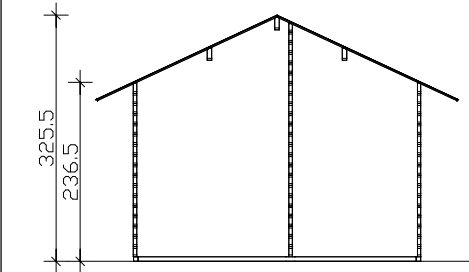
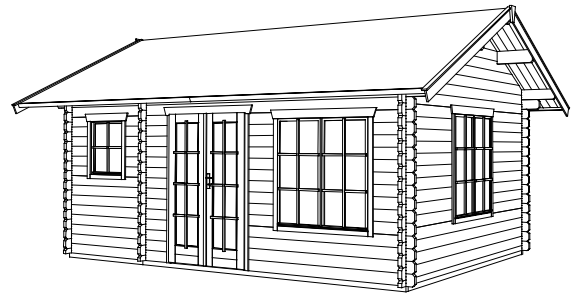
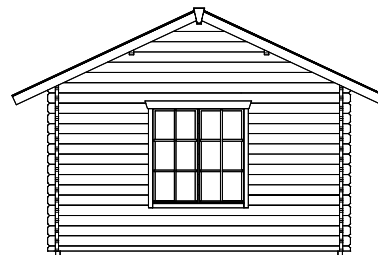


- SKAN HOLZ
Log cabins**
1. 45mm planks as stable wall construction
 2. concealed cross-bracing for optimum utilization of space
 3. profiled corner connections for reliable protection against rain
- Wooden floor with ground supports, roofing paper and accessories included.

SKAN HOLZ corner connections



* Door - Position freely selectable



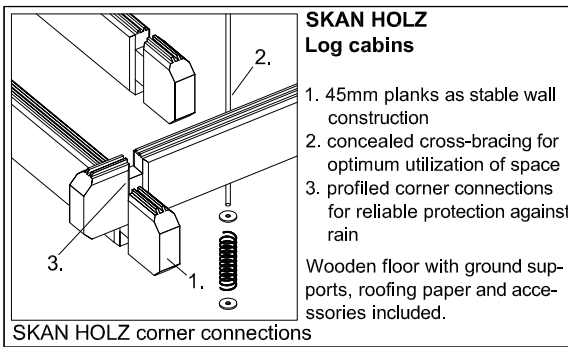
Floor plan, cross-section and elevations M 1:100

Esbjerg 1 380 x 520cm

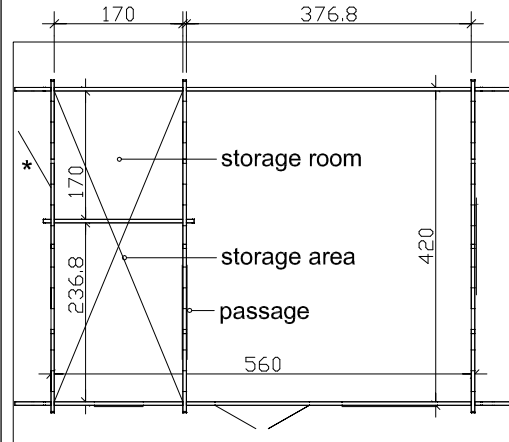
Data sheet / construction description

Esbjerg

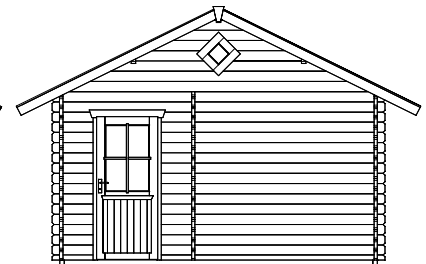
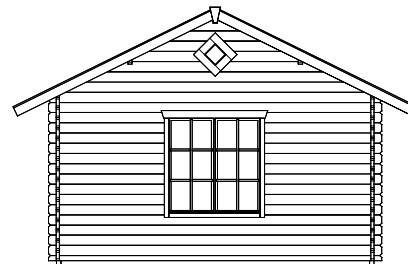
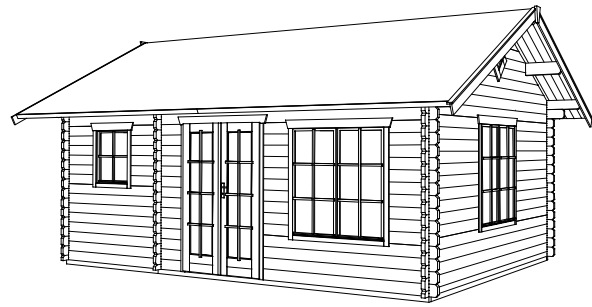
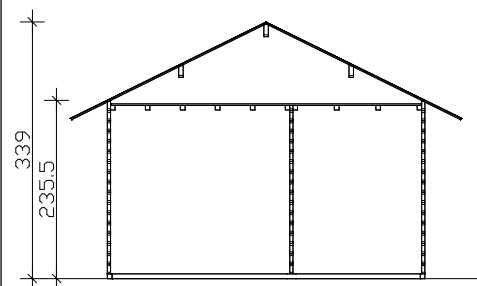
Walls	45mm-wooden planks , untreated
Roof	19mm profiled wood , untreated
Floors	19mm floor planks , untreated
Ground supports	60 x 60mm , impregnated
Iron parts	galvanized
Width x depth	380cm x 520cm
Height, eaves / gable	236,5cm / 325,5cm
Area / building volume	19,76m² / 55,53m³
Roof inclination	25° / snowload max. sk = 0,75kN/m²
Roof extension	around circumference 50cm / roof surface 32,65m²
Packaging unit	Width x length x height 120 x 570 x 95cm / 1930kg
EAN	4018211 606108
Inclusive	1 door (passage 117,5 x 186,5cm), 1 door (passage 78,5 x 186,5cm), 1 tilt-and-turn single window (opening 57,5 x 70,5cm), 2 tilt-and-turn double window (opening 2 x 57,5 x 123,5cm), 1 layer of tarpaper for roofing, concealed tie rod construction, profiled corner connections



SKAN HOLZ corner connections



Using storage area at your own risk!
* Door - Position freely selectable

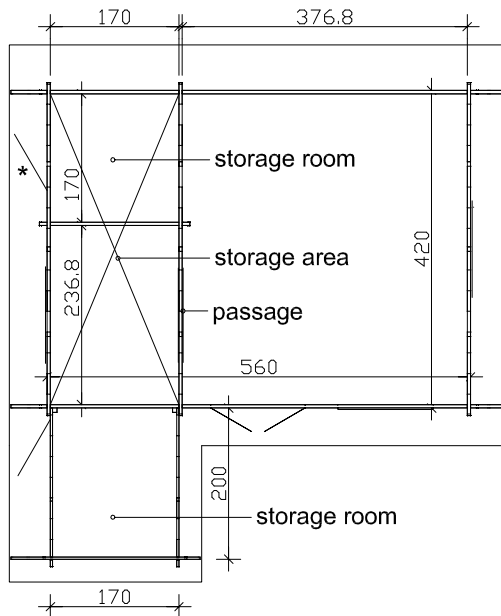
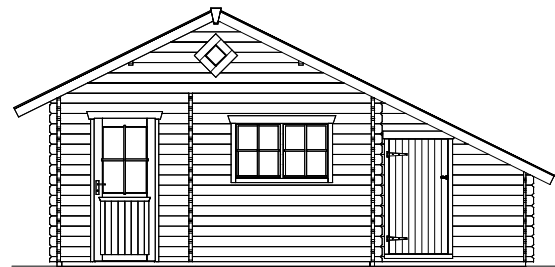
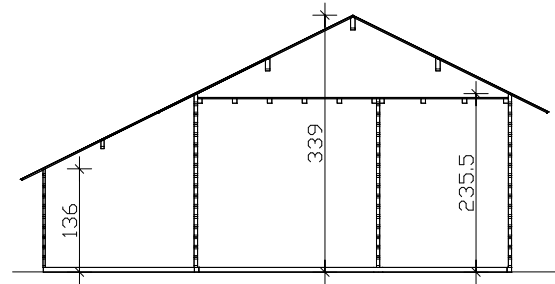
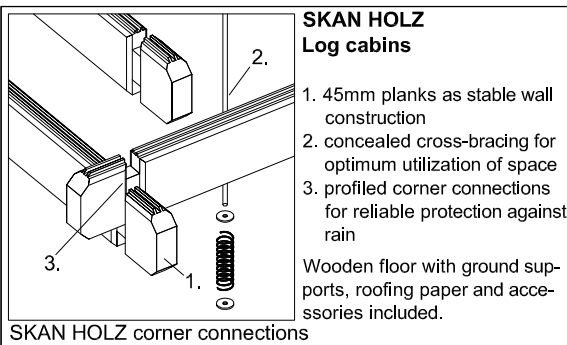


Floor plan, cross-section and elevations M 1:100

Esbjerg 2 420 x 560cm
Data sheet / construction description

Esbjerg

Walls	45mm-wooden planks , untreated
Roof	19mm profiled wood , untreated
Floors	19mm floor planks , untreated
Ground supports	60 x 60mm , impregnated
Iron parts	galvanized
Width x depth	420cm x 560cm
Height, eaves / gable	235,5cm / 339cm
Area / building volume	23,52m² / 67,56m³
Roof inclination	26° / snowload max. sk = 0,75kN/m²
Roof extension	around circumference 50cm / roof surface 38,00m²
Packaging unit	Width x length x height 120 x 580 x 110cm / 2295kg
EAN	4018211 606115
Inclusive	1 door (passage 117,5 x 186,5cm), 1 door (passage 78,5 x 186,5cm), 1 tilt-and-turn single window (opening 57,5 x 70,5cm), 2 tilt-and-turn double windows (opening 2 x 57,5 x 123,5cm), 1 layer of tarpaper for roofing, concealed tie rod construction, profiled corner connections



Using storage area at your own risk!
* Door - Position freely selectable

Floor plan, cross-section and elevations M 1:100

Esbjerg 3 420 x 560cm + 200 x 170cm

Data sheet / construction description

Esbjerg

Walls	45mm-wooden planks , untreated
Roof	19mm profiled wood , untreated
Floors	19mm floor planks , untreated
Ground supports	60 x 60mm , impregnated
Iron parts	galvanized
Width x depth	420cm x 560cm + 200 x 170cm
Height, eaves / gable	235,5cm / 339cm
Area / building volume	26,92m² / 73,94m³
Roof inclination	26° / snowload max. sk = 0,75kN/m²
Roof extension	around circumference 50cm (storage room 30cm) / roof surface 42,61 m²
Packaging unit	Width x length x height 120 x 580 x 115cm / 2480kg
EAN	4018211 606122
Inclusive	1 door (passage 117,5 x 186,5cm), 1 door (passage 78,5 x 186,5cm), 1 tilt-and-turn double window (opening 57,5 x 70,5cm), 1 tilt-and-turn double window (opening 2 x 57,5 x 123,5cm), 1 layer of tarpaper for roofing, concealed tie rod construction, profiled corner connections